

Cranked Pastry

A Team Dark Psytrance Production

By the Numbers

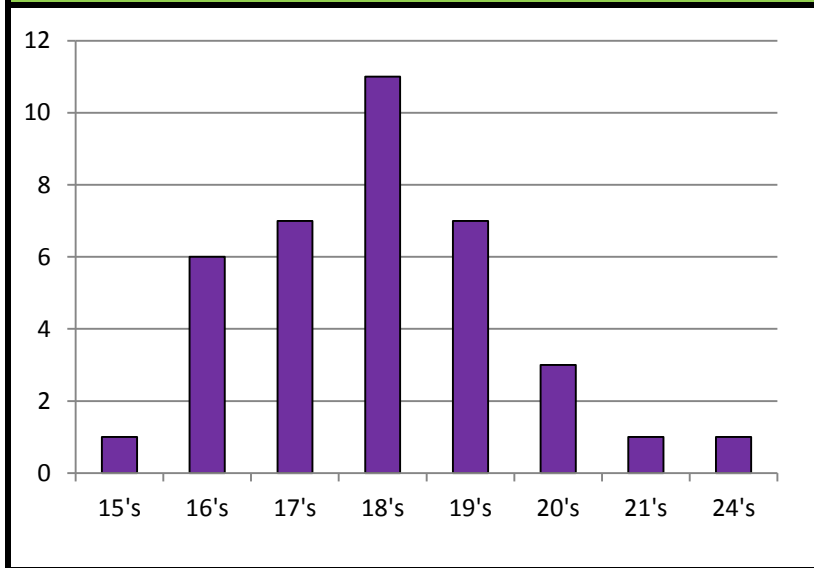
Total Songs	30	Total Charts	37
--------------------	----	---------------------	----

Stepartists	@@	26 1/3 Charts
	UPSFANBOY420	5 1/3 Charts
	Zaia	5 1/3 Charts

Pack Steps Information	
Total Steps	
Least Steps	Shogoki, with 3037 steps
Most Steps	Peter on Crack has the most in a non-marathon file, with 6771 steps total

Difficulty Information			
Average Difficulty:	18.0		
	Sum of difficulties add up to 666, OoOo		
15's	1	19's	7
16's	6	20's	3
17's	7	21's	1
18's	11	24's	1

Graph of Difficulty Distribution



Sync People	@@	22 Charts
	Fraxtil	3.5 Charts
	Aoreo	2.5 Charts
	Mute	2 Charts

Beta Testers	@@	Rynker	D4RK
	UPSFANBOY420	Parrax	Krushrpants
	Zaia	Zetorux	Lil' Beastling
	Aoreo	Archi	

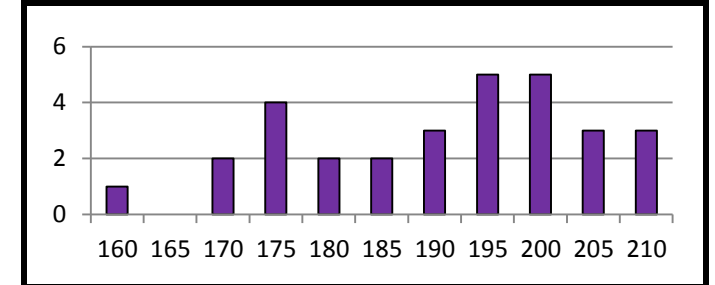
Pack Music Information	
Total Music Length	4 Hours, 1 Minute, and 47 Seconds
Shortest Song	Shogoki (5 minutes, 18 seconds)
Longest Song	Last Trip (30 minutes, 54 seconds)
	Addiction is the longest single song at 9 minutes, 11 seconds
Average Song Length	8 minutes, 4 seconds
	7 minutes, 16 seconds sans Last Trip
Adj. Song Length is the duration from the first to last note in a song	
Average Adj. Song Length	7 minutes, 42 seconds
	6 minutes, 56 seconds sans Last Trip

Pack Development Information	
Information based off 35 new charts, not including Detonator and The End	
First Chart	Ganbatte: 12/28/2013
Last Chart	Last Trip: 8/6/2014
Days/Chart	6.3 days (I'm lazy)
Total Days	221 Days
Arrows/Day	
Release Date	8/8/2014
Pack was originally intended to be a 10 song mini pack, with only 2 18's and 1 19. Things quickly got out of hand and now look where we are...	

Misc Pack Information			
Average Steps/Chart	5488 (4991 sans Last Trip)		
Step Density uses music wheel information: (# of steps with jumps and hands counting as one)/(absolute song length)			
Average Step Density	11.26 Arrows/Second		
Step Density Adj. is the true step density: (# of total steps)/(Adj. Song Length)			
Average Step Density Adj.	11.79 Arrows/Second		
Lowest Step Density	Death of the Dead Sea (8.58, 9.04 Adj.)		
Highest Step Density	Dementa Acida (13.10, 13.55 Adj.)		
Total Jumps	57		
Average Jumps/Chart	1.54		
Longest Stream	215 Measures Unbroken (Stars)		
Fastest Footspeed	Ganbatte, 262.5 BPM		
Frequent Artists: Artists whose songs appear more than once			
Shouton	5 Songs	Fele	2 Songs
MetaHuman	3 Songs	Setek	2 Songs
SooSpicey	2 Song	Gotalien	2 Songs

BPM Information			
Slowest BPM		Nocturnal Nectar, 162	
Fastest BPM		Last Trip, 220	
		Last Trip is mostly 205, Peter on Crack is 214	
Average BPM		191.5	
160-169	1	190-199	8
170-179	6	200-209	8
180-189	4	210-219	3

Graph of BPM Distribution



Cranked Pastry

A Team Dark Psytrance Production

Chart Breakdowns - Page 1/7

Breakdown Formatting: Song Title - Song Artist

Easy - Footspeed; Hard - Original Expert, Expert now Dumpier

BPM	BPM value	Stepartist	Stepartist Name
Difficulty	Difficulty Value	Total Steps	# of Steps

Simple Breakdown (more useful): Any break less than a measure is considered part of the same stream. **Red text** is stream and **Blue text** is break (Sorry James). No Footspeed Marked.

In-Depth Breakdown (more accurate): Broken up streams chained together with hyphens, -, FS transitions marked with /, otherwise it is the same as above. **Green text** is footspeed.

Total Stream	Measures	Total Break	Measures
Length	Song Length	Length Adj.	Length Adj.
Step Density	Density (Step/S)	SD Adj.	Step Density Adj.

This is used to help represent unquantifiable data.

Footspeed	Measures of Footspeed	FS BPM	BPM
-----------	-----------------------	--------	-----

Acid Monster - Cosmo

BPM	177	Stepartist	UPSFANBOY420
Difficulty	16+	Total Steps	4367 (0 Jumps)

Simple Breakdown: 15-1-93.5-8-14.5-1.5-132.5-1-8

In-Depth Breakdown: 8-7-1-32-1-37-23.5-8-14.5-1.5-31.5-7.5-0.5-7.5-0.5-31-48.5-14-1-8-10

Total Stream	271	Total Break	12.5
Length	7:40	Length Adj.	6:59
Step Density	9.49	SD Adj.	10.42

Beginning severely lowers the step density. Also there are some boosts in the beginning. This is really hard for a 16, probably around the same difficulty as Sukure.

Addiction - Yoshua Em vs Brains & Bones

BPM	195	Stepartist	@@
Difficulty	18+	Total Steps	5972 (2 Jumps)

Simple Breakdown: 144-3-1-4-39-4-64-18-112

In-Depth Breakdown: 16-8-56-8-8-8-56-3-1-4-39-4-64-18-16-96-16

Total Stream	360	Total Break	29
Length	9:11	Length Adj.	8:19
Step Density	10.83	SD Adj.	11.97

Song makes me sleepy. Zzzzzzzzz... Tied with The End for "darkest" song in the pack. Compared to the rest of the charts, the patterns are much tamer in this. I doubt anyone will play this file.

Alien Interview - Shouton

BPM	170	Stepartist	Zaia & @@
Difficulty	19	Total Steps	5217 (1 Jump)

Simple Breakdown: 0.75-6-1.25-1.75-6.5-2-35.5-2-22.5-4.5-72-8-32.5-1-3-1-13.5-1-22-4-9-5-48

In-Depth Breakdown: 1-6-0.5-1-1.75-2/1-0.5-0.5-2-1-2-1.25/1-1-1-1.25/1/3.25/1/4.25/1/3.25/1/3.25/1/3.25/1-0.75-2-4-6.25-4-4-7-4.5-2/0.5-0.75-0.75-12-4.25/2.25/0.75/1/2.75-16.25/2.75/3.5-0.5-6.5-3.75-4.25-1.5/2/4.5-4-2.25-8-2/3/6/2/12-9-1-3-1-6/0.5/0.5/1/6-1-6-7/1.5/3.75-11-4-8/1.5-5-48-12

Total Stream	271	Total Break	35.75
Length	8:02	Length Adj.	7:57
Step Density	10.82	SD Adj.	10.94

The In-Depth breakdown is hilariously useless because of its complexity. Just know the file isn't very easy...

Footspeed	61.5 Measures	FS BPM	255
-----------	---------------	--------	-----

Alien Interview - Shouton

BPM	170	Stepartist	@@
Difficulty	16+	Total Steps	4903 (1 Jump)

Simple Breakdown: 0.75-6-1.25-1.75-6.5-2-35.5-2-22.5-4.5-72-8-32.5-1-3-1-13.5-1-22-4-9-5-48

In-Depth Breakdown: 0.75-6-0.5-0.75-1.75-2.75-0.5-0.5-2-0.75-2-2-0.75-1-8.25-22.75-0.75-2-4-2.75-3.75-4-7-4.5-2-0.75-0.75-8-10-21.5-0.5-6.5-3.75-4.25-7.5-4-2.25-8-23.5-9-1-3-1-13.5-1-4-11.75-11-4-9-5-48-12

Total Stream	271	Total Break	35.75
Length	8:02	Length Adj.	7:57
Step Density	10.17	SD Adj.	10.28

Even without footspeed this is still a complicated breakdown... 24ths from Easy replaced with 16ths. Looks deceptively easy based on the stats presented. I like this chart a lot.

Beat of Life - Metaform

BPM	200	Stepartist	Zaia & @@
Difficulty	24-	Total Steps	4930 (9 Jumps)

Simple Breakdown: 55-1-7-1-23-1-26-2-7-1-7-1-40-4-36-8-3-1-8-1-40

In-Depth Breakdown: 4-4-11-4-1-8-18-2-3-1-2-2-3-1-28.75-1-30/2-2-8.75-1-8.75-1-8.75/1/22.5/2/2.5/2/10-4-1/3/35/4-8-1-1-1-1/1/1/1/1/1/1/1-1-4-16-20-32

Total Stream	284	Total Break	19
Length	6:24	Length Adj.	6:15
Step Density	12.81	SD Adj.	13.15

Hardest chart in the pack by far, but it isn't stamina. Probably on par with Shit Palette 2.0. Still a lot of stamina too though.

Footspeed	164 Measures	FS BPM	250
-----------	--------------	--------	-----

Cranked Pastry

A Team Dark Psytrance Production

Chart Breakdowns - Page 2/7

Breakdown Formatting: Song Title - Song Artist

Easy - Footspeed; Hard - Original Expert, Expert now Dumpier

BPM	BPM value	Stepartist	Stepartist Name
Difficulty	Difficulty Value	Total Steps	# of Steps
Simple Breakdown (more useful): Any break less than a measure is considered part of the same stream. Red text is stream and Blue text is break (Sorry James). No Footspeed Marked.			
In-Depth Breakdown (more accurate): Broken up streams chained together with hyphens, -, FS transitions marked with /, otherwise it is the same as above. Green text is footspeed.			
Total Stream	Measures	Total Break	Measures
Length	Song Length	Length Adj.	Length Adj.
Step Density	Density (Step/S)	SD Adj.	Step Density Adj.
This is used to help represent unquantifiable data.			
Footspeed	Measures of Footspeed	FS BPM	BPM

Beat of Life - Metaform

BPM	200	Stepartist	@@
Difficulty	18	Total Steps	4242 (9 Jumps)
Simple Breakdown: 54-1-7-1-7-1-15-1-26-2-7-1-7-1-16-8-16-4-62-8-11-1-40			
In-Depth Breakdown: 4-4-3-0.5-4-3-4-1-8-7-4.5-3-3-2-3-1-2-2-3-1-2-1-4-1-2-1-5-2-1-4-1-2-1-5-2-1-3-2-2-1-3-2-2-2-2-4-1-1-2-4-1-1-2-4-2-2-4-2-8-14-2-4-8-8-3-0.5-4.5-8-4-8-1-1-1-8-1-4-16-20-32			
Total Stream	268	Total Break	29
Length	6:24	Length Adj.	6:15
Step Density	11.02	SD Adj.	11.31
Patterns are relatively tame. This is probably the easiest stamina 18 that isn't Detonator. No boosts, fairly straightforward. Ending decreases step density significantly.			

Bloody Hell Mate - Virtuanoise & Will O' Wisp

BPM	180	Stepartist	Zaia
Difficulty	17-	Total Steps	4587 (2 Jumps)
Simple Breakdown: 30.75-1-15-1-30.25-2-2-1-22.5-1-4-1-29.5-2-18.25-15.5-22.5-1-15-3-1-1-51.5-1-30.25			
In-Depth Breakdown: 15.75-15-1-15-1-7.75-7.75-7.75-7-2-2-1-7-0.75-15.5-1-1-3-1-8-7.5-8-6-2-7.25-7.5-2-0.5-1.5-15.5-7.5-4-4-6-1-1-15-3-1-1-36.5-15-1-15-16.25			
Total Stream	272.5	Total Break	32
Length	7:31	Length Adj.	6:53
Step Density	10.17	SD Adj.	11.11
Surprise boosts towards the end, however not very much. Fairly easy 17, lots of Ian breaks as you can see. Virutanoise is definitely one of the best up and coming Hi-Tech artists, check him out.			

Death of the Dead Sea - KASHYYYYK

BPM	170	Stepartist	UPSFANBOY420
Difficulty	16-	Total Steps	4066 (0 Jumps)
Simple Breakdown: 8-8-59.5-8-16-8-58-2-32-12-49			
In-Depth Breakdown: 56-8-8-1-4-26.5-0.5-4-24-8-16-8-58-2-32-12-49			
Total Stream	222.5	Total Break	38.5
Length	7:54	Length Adj.	7:30
Step Density	8.58	SD Adj.	9.04
Least dense file in the pack but that is mostly because of the beginning. Pretty technical but only 16ths, no boosts. The length is what makes it a 16, which it barely is.			

Demente Acida - Lyzergik Brain

BPM	212	Stepartist	@@
Difficulty	19	Total Steps	4770 (0 Jumps)
Simple Breakdown: 1-1-1-1-167-8-111-1-15			
In-Depth Breakdown: 1-1-1-1-1-1-8-16-16-16-8-8-4-8-4-8-8-1.5-0.5-1.5-0.5-1.5-1-1.5-8-8-12-4-8-8-8-4-4-4-4-4-4-12-4-4-4-2-2-8-4-4-4-4-4-8-7-1-8-4-3-1			
Total Stream	295	Total Break	11
Length	6:04	Length Adj.	5:52
Step Density	13.10	SD Adj.	13.55
Many, many Ian breaks but this is still very hard. In my life, my mind is 211.51, this is 212.16 and longer. Sped up from 204. No boosts. Out of nowhere with the highest step density in the pack.			

Destination Talos - MetaHuman

BPM	187	Stepartist	Zaia
Difficulty	17+	Total Steps	4937 (0 Jumps)
Simple Breakdown: 79.5-4-2-5.5-63-30-15-1-33-8-16-1-47-1-15-1-4-3-1			
In-Depth Breakdown: 8-33-14-0.5-0.5-32-4-2-5.5-8-16-39-30-8-7-1-4-8-5-16-8-16-1-16-31-1-15-1-4-3-1			
Total Stream	275.5	Total Break	63
Length	7:36	Length Adj.	7:15
Step Density	10.83	SD Adj.	11.35
There is one boost going into the big break, which is also purples (12ths though). MetaHuman is good and so is this song. Patterns are pretty hard. Zaia rated this an 18 originally but nope.			

Cranked Pastry

A Team Dark Psytrance Production

Chart Breakdowns - Page 3/7

Breakdown Formatting: Song Title - Song Artist			
Easy - Footspeed; Hard - Original Expert, Expert now Dumpier			
BPM	BPM value	Stepartist	Stepartist Name
Difficulty	Difficulty Value	Total Steps	# of Steps
Simple Breakdown (more useful): Any break less than a measure is considered part of the same stream. Red text is stream and Blue text is break (Sorry James). No Footspeed Marked.			
In-Depth Breakdown (more accurate): Broken up streams chained together with hyphens, -, FS transitions marked with /, otherwise it is the same as above. Green text is footspeed.			
Total Stream	Measures	Total Break	Measures
Length	Song Length	Length Adj.	Length Adj.
Step Density	Density (Step/S)	SD Adj.	Step Density Adj.
This is used to help represent unquantifiable data.			
Footspeed	Measures of Footspeed	FS BPM	BPM

Detonator - Shouton			
BPM	197	Stepartist	@@
Difficulty	18-	Total Steps	3966 (3 Jumps)
Simple Breakdown: 21.5-2-108-1-16-1.5-84.5-6-2			
In-Depth Breakdown: 15.5-0.5-6-2-16-32-60-1-16-1.5-44-24-16.5-6-1-1-24			
Total Stream	232	Total Break	11
Length	5:31	Length Adj.	5:17
Step Density	11.97	SD Adj.	12.51
By far the easiest 18 in the pack. Arguably the file that made Dark Psytrance a thing. The 20ths have been fixed in this pack so play this version, not the OH one. Lots of boosts. Sped up from 195.			

Digital Messiah - Parandroid			
BPM	190	Stepartist	@@
Difficulty	18	Total Steps	5533 (0 Jumps)
Simple Breakdown: 172-4-79-4-24-1-2-1-45-4-16			
In-Depth Breakdown: 24-0.5-85-62-4-17-0.5-2-12-48-4-24-1-2-1-32-13-4-16-8			
Total Stream	338	Total Break	15
Length	7:39	Length Adj.	7:39
Step Density	12.05	SD Adj.	12.05
I bet you never expected there to be a 190 BPM 18, but here it is. Arguably most well-known Cranked Pastry file. Boosts are plentiful. This gets pretty hype towards the end.			

Ganbatte - Shouton			
BPM	175	Stepartist	Zaia & @@
Difficulty	18-	Total Steps	5456 (0 Jumps)
Simple Breakdown: 110-1-31-1-16-4-127.5-8-7-1-40			
In-Depth Breakdown: 7.5-0.5-21-4-31-7-39.5-1-1.5-1.5-1-0.75/4/1.5-1.5-1-0.75/19-1-16-4-8-8-0.5-24-7.5-0.5-16-32/1.5-1.5-1-0.75/4/1.5-1.5-1-0.75/20-8-7-1-16-1.5-1.5-1-0.75-16			
Total Stream	331.5	Total Break	18
Length	8:14	Length Adj.	7:58
Step Density	11.04	SD Adj.	11.41
Borderline 18, very bursty but it is fast so why not. They come in pairs except for the last one. Otherwise same as Expert.			
Footspeed	23.75 Measures	FS BPM	262.5

Ganbatte - Shouton			
BPM	175	Stepartist	@@
Difficulty	17-	Total Steps	5336 (0 Jumps)
Simple Breakdown: 110-1-31-1-16-4-127.5-8-7-1-40			
In-Depth Breakdown: 7.5-0.5-21-4-31-7-39.5-1-31-1-16-4-8-8-0.5-24-7.5-0.5-16-64-8-7-1-16-8-16			
Total Stream	331.5	Total Break	18
Length	8:14	Length Adj.	7:58
Step Density	10.8	SD Adj.	11.16
Really easy 17 but more of a 17 than Sukure. Song is hype and there are boosts near the beginning and end. This was the file that started this pack, thank you Shouton.			

Instigator - SooSpicy			
BPM	205	Stepartist	@@
Difficulty	18	Total Steps	4981 (0 Jumps)
Simple Breakdown: 20-1-13-2-2-2-2-1-2-44-4-64-1-23.5-2-4-1-16.5-2-1-3-1-3-1-3-1-28-38-2-2-2-6-2-2-4-2-11-2-6-2-1			
In-Depth Breakdown: 16-12-8-1-1-8-4-2-2-2-2-1-2-44-4-8-16-29-11-1-3-0.5-20.5-2-4-1-4-4.5-8-2-1-3-1-3-1-3-1-28-4-4-12-12-6-2-2-6-2-2-2-4-2-2-0.5-9-2-6-2-1			
Total Stream	264	Total Break	71
Length	6:54	Length Adj.	6:53
Step Density	12.02	SD Adj.	12.06
The first run starts later than the expert, both runs are significantly more broken up with ian breaks and regular breaks. The big break itself is also easier. Boost in the first run section.			

Cranked Pastry

A Team Dark Psytrance Production

Chart Breakdowns - Page 4/7

Breakdown Formatting: Song Title - Song Artist

Easy - Footspeed; Hard - Original Expert, Expert now Dumpier

BPM	BPM value	Stepartist	Stepartist Name
Difficulty	Difficulty Value	Total Steps	# of Steps
Simple Breakdown (more useful): Any break less than a measure is considered part of the same stream. Red text is stream and Blue text is break (Sorry James). No Footspeed Marked.			
In-Depth Breakdown (more accurate): Broken up streams chained together with hyphens, -, FS transitions marked with /, otherwise it is the same as above. Green text is footspeed.			
Total Stream	Measures	Total Break	Measures
Length	Song Length	Length Adj.	Length Adj.
Step Density	Density (Step/S)	SD Adj.	Step Density Adj.
This is used to help represent unquantifiable data.			
Footspeed	Measures of Footspeed	FS BPM	BPM

Instigator - SooSpicey

BPM	205	Stepartist	@@
Difficulty	19-	Total Steps	5343 (0 Jumps)
Simple Breakdown: 30-1-187.5-1-2-2-2-2-2-3-26.5-75			
In-Depth Breakdown: 7-22-8-1-179-0.5-8.5-1-2-2-2-2-2-0.5-1-26.5-4-16-12-43			
Total Stream	301.5	Total Break	35.5
Length	6:54	Length Adj.	6:53
Step Density	12.91	SD Adj.	12.94
Basically this amounts to a 220 measure run and then a 80 measure run. There are instances of lan breaks in both, the first run having a small amount of boosts. This or Stars is easiest 19.			

JackOff Marathon - Setek

BPM	206	Stepartist	@@
Difficulty	20-	Total Steps	6722 (0 Jumps)
Simple Breakdown: 116-2-28-3-5-7-1-3-265.5			
In-Depth Breakdown: 12-12-28-48-16-2-15.5-0.5-12.5-3-5-7-1-3-16-0.5-16-8-0.5-15.5-0.5-5-3-6-10-6-7-49-32-58-6-10-18-4			
Total Stream	415.5	Total Break	17
Length	8:34	Length Adj.	8:29
Step Density	13.01	SD Adj.	13.21
This file is relentless, but as a 20 it is quite an easy one. Originally had this as a 19 but caved. Sped up from 200. No boosts, hard patterns, one small break. I usually zone out when playing it.			

Last Trip - DJ Asamori

BPM	199-220 (205)	Stepartist	Team Dark Psytrance
Difficulty	21	Total Steps	22898 (1 jump)
Simple Breakdown: 30 minutes of stream with lan breaks			
In-Depth Breakdown: Do you think I'm going to make a breakdown for this? If I did, would you read it? Would it have any meaning? It is basically 199 stream for first 1/3, 205 stream for second 1/3, 210-220 for the last 1/3.			
Total Stream	1484	Total Break	56
Length	30:54	Length Adj.	29:47
Step Density	12.35	SD Adj.	12.84
Collab Boss File between Zaia, UPSFANBOY420, and I. Measures: @@ - 0-219, 983-1575 (811 measures), Zaia - 219-394, 841-983 (317 measures), UPSFANBOY420 - 394-841 (447 Measures)			

Los Tscheppera - Xandoz

BPM	185	Stepartist	@@
Difficulty	17	Total Steps	4917 (0 Jumps)
Simple Breakdown: 62-2-30.5-1-30.5-1-31-8-7-1-79-1-61			
In-Depth Breakdown: 16-46-2-15.5-0.5-15-1-15.5-0.5-15-1-4-11-16-8-7-1-40-7-25-7-1-61-3			
Total Stream	301	Total Break	15
Length	7:02	Length Adj.	6:55
Step Density	11.65	SD Adj.	11.85
This is the same as the expert but it has a small break. The 8 measures actually do add up, making it slightly less than a 17+. Xandoz is an underrated artist.			

Los Tscheppera - Xandoz

BPM	185	Stepartist	@@
Difficulty	17+	Total Steps	4971 (0 Jumps)
Simple Breakdown: 62-2-30.5-1-30.5-1-54-1-79-1-61			
In-Depth Breakdown: 16-46-2-15.5-0.5-15-1-15.5-0.5-15-1-4-11-16-8-7-1-40-7-25-7-1-61-3			
Total Stream	309	Total Break	7
Length	7:02	Length Adj.	6:55
Step Density	11.78	SD Adj.	11.98
Mid to upper 17, probably the hardest file ever at 185 since that is a rare bpm range. Not many tricky rhythms, no boosts, pretty straightforward file.			

Cranked Pastry

A Team Dark Psytrance Production

Chart Breakdowns - Page 5/7

Breakdown Formatting: Song Title - Song Artist

Easy - Footspeed; Hard - Original Expert, Expert now Dumpier

BPM	BPM value	Stepartist	Stepartist Name
Difficulty	Difficulty Value	Total Steps	# of Steps
Simple Breakdown (more useful): Any break less than a measure is considered part of the same stream. Red text is stream and Blue text is break (Sorry James). No Footspeed Marked.			
In-Depth Breakdown (more accurate): Broken up streams chained together with hyphens, -, FS transitions marked with /, otherwise it is the same as above. Green text is footspeed.			
Total Stream	Measures	Total Break	Measures
Length	Song Length	Length Adj.	Length Adj.
Step Density	Density (Step/S)	SD Adj.	Step Density Adj.
This is used to help represent unquantifiable data.			
Footspeed	Measures of Footspeed	FS BPM	BPM

Nocturnal Nectar - Antagon

BPM	162	Stepartist	@@
Difficulty	15+	Total Steps	4296 (0 Jumps)
Simple Breakdown: 7-1-140-2-120			
In-Depth Breakdown: 7-1-140-2-40-40-8-8-20-4-3			
Total Stream	267	Total Break	3
Length	7:23	Length Adj.	6:44
Step Density	9.70	SD Adj.	10.63
Hard 15. Hard patterns and boosts. One of the longest unbroken runs in the pack. The song itself is pretty dark. 162 bpm has a density of 10.8 so when you see this is 10.63...			

Peter on Crack - Fele

BPM	214	Stepartist	@@
Difficulty	20+	Total Steps	6771 (0 Jumps)
Simple Breakdown: 14.5-1-129.5-1-12-1-134.5-1-15-1-38-2-23-2-49.5			
In-Depth Breakdown: 8-7.5-0.5-7-1-48-16-32-7.5-0.5-8-18-1-12-1-6-1.5-0.5-40-40-8-39-1-15-1-38-2-23-1-16-8-8-4-4-4-1.5			
Total Stream	416	Total Break	9.5
Length	8:25	Length Adj.	8:20
Step Density	13.41	SD Adj.	13.54
Harder than Call of the Hound (probably) and the hardest single song in the pack stamina-wise. There is a big slowdown to 150 near the middle and 2 more at the end. Why Family Guy though...			

Robot Brain Era - Gotalien

BPM	200	Stepartist	@@
Difficulty	18+	Total Steps	5446 (0 Jumps)
Simple Breakdown: 12-1-15-1-14-1-15-2-7-1-7-1-7-1-14-1-16-1-14-1-145-21-30-2-36			
In-Depth Breakdown: 12-1-15-1-8-6-1-15-2-4-3-1-7-1-7-1-14-1-8-8-1-8-6-1-24-46-29-0.5-28-18-21-16-14-2-36			
Total Stream	332	Total Break	37
Length	7:44	Length Adj.	7:32
Step Density	11.95	SD Adj.	12.27
Probably the most well-known Dark Psytrance file because of #threerapids. Hard patterns, really hard 18. No boosts but there is a slowdown in the middle and a speedup at the end to 230.			

Shanti (Angry Luna Mix) - Angry Luna vs Gotalien

BPM	198	Stepartist	@@
Difficulty	18	Total Steps	4598 (1 Jump)
Simple Breakdown: 31-1-7-1-55-1-24-14-24.5-1-31-1-56-8-52			
In-Depth Breakdown: 31-1-7-1-16-24-15-1-16-8-14-5-4.5-0.5-15-1-8-23-1-40-16-8-52			
Total Stream	280.5	Total Break	27.5
Length	6:38	Length Adj.	6:19
Step Density	11.55	SD Adj.	12.13
"Shanti Jr.", basically an easier version of the Gotalien mix. I like the song less because it is less crunchy (that's how I describe it). Same speedup at the end as the Gotalien mix to 240. No boosts.			

Shanti (Gotalien Mix) - Angry Luna vs Gotalien

BPM	198	Stepartist	@@
Difficulty	18+	Total Steps	5025 (0 Jumps)
Simple Breakdown: 71-2-48-12-130.5-1.5-8-8-52			
In-Depth Breakdown: 16-6-1-18-16-14-2-16-24-8-12-4-4-20-8-24-40-24-6.5-1.5-8-8-52			
Total Stream	309.5	Total Break	23.5
Length	7:15	Length Adj.	6:48
Step Density	11.55	SD Adj.	12.32
My favorite song in the pack, the actual song itself almost never was released (thank you Gotalien for giving it to me). Relentless, hardish patterns, boosts unlike Shanti Jr., speedup to 240 at end.			

Cranked Pastry

A Team Dark Psytrance Production

Chart Breakdowns - Page 6/7

Shogoki - Shouton

BPM	175	Stepartist	UPSFANBOY420
Difficulty	16-	Total Steps	3037 (0 Jumps)

Simple Breakdown: 32-1-49.5-31-22-2-6-2-6-2-6-1-24.5

In-Depth Breakdown: 13-32-1-18-1.5-15-15-2-31-11-22-2-6-2-6-2-6-1-24.5-8

Total Stream	177	Total Break	28
Length	5:18	Length Adj.	5:01
Step Density	9.55	SD Adj.	10.09

Shortest file in the pack, I'm glad the Adj. is over 5 minutes though. Slowdown at the end. Very slight boosts in the middle, speedup gimmick that you can cmod.

Silver Screen - MetaHuman

BPM	190	Stepartist	Zaia
Difficulty	17	Total Steps	4082 (3 Jumps)

Simple Breakdown: 15-1-23-1-15-1-14-2-14.5-1-8-3-18-1-15-1-15-1-7-1-7-2-40-2-48

In-Depth Breakdown: 8-7-1-23-1-15-1-14-2-7.5-0.5-7-1-8-3-0.5-0.5-0.5-0.5-0.5-15-1-8-7-1-15-1-7-1-7-2-40-2-16-16-16-10

Total Stream	239.5	Total Break	17.5
Length	5:53	Length Adj.	5:34
Step Density	11.56	SD Adj.	12.22

This song definitely stands out as the most hype and the last Dark Psytrance/Hi-Tech thing in the pack, but MetaHuman is a good Dark Psytrance artist so that is ok. End has boosts, blame Zaia.

Sleep Well - Selective Mood

BPM	176	Stepartist	UPSFANBOY420
Difficulty	16+	Total Steps	4495 (0 Jumps)

Simple Breakdown: 127-1-7-1-128-6-18

In-Depth Breakdown: 8-12-40-4-12-8-16-12-4-4-12-3-1-4-3-1-4-4-16-32-64-8-6-18

Total Stream	280	Total Break	8
Length	6:51	Length Adj.	6:38
Step Density	10.94	SD Adj.	11.29

This is really borderline. I originally had it as a 17 (which Dirk still thinks it is) but I decided it is about the same as Sukure and rerated it. Originally had boosts but they were removed.

Squirrel Vision - SooSpicey

BPM	210	Stepartist	@@
Difficulty	19-	Total Steps	4681 (23 Jumps)

Simple Breakdown: 3-1-3-1-19.5-1-24-1-16-2-4-18-16-1-36-4-16.5-3.5-16-2-27-1-7-1-16-1-16-2-16-4-32-4-2-3.5-4

In-Depth Breakdown: 3-1-3-1-8.5-0.5-8-3-1-24-1-16-2-4-18-16-1-16-0.5-4-0.5-16-4-16.5-3.5-16-2-27-1-7-1-16-1-16-2-16-4-32-4-2-3.5-1-3-2.5

Total Stream	274	Total Break	55
Length	6:27	Length Adj.	6:14
Step Density	12.04	SD Adj.	12.52

Most jumps in the pack. Same as the expert except more Ian breaks and one giant break that makes it easier. I made the expert because I was disappointed with how easy this was. No boosts.

Squirrel Vision - SooSpicey

BPM	210	Stepartist	@@
Difficulty	19+	Total Steps	4995 (0 Jumps)

Simple Breakdown: 70-2-20-2-73.5-3.5-45-1-42-1-16-4-32-4-2-3.5-4

In-Depth Breakdown: 8-9-53-2-8-4-4-4-2-33-0.5-4-0.5-36.5-3.5-18-27-1-42-1-16-4-32-4-2-3.5-1-3-2.5

Total Stream	304.5	Total Break	20
Length	6:27	Length Adj.	6:14
Step Density	12.91	SD Adj.	13.36

The most dumpy file in the pack. Hard patterns, really hard 19. Watch out, I stepped the gunshots too. This file is really dark as well. SooSpicey kinda does that. No boosts.

Stars - Fele

BPM	200	Stepartist	@@
Difficulty	19-	Total Steps	6359 (0 Jumps)

Simple Breakdown: 32-6-72-1-48-1-16-1-8-2-215

In-Depth Breakdown: 32-6-72-1-8-0.5-40-1-16-1-8-2-215

Total Stream	391	Total Break	11.5
Length	8:57	Length Adj.	8:38
Step Density	11.84	SD Adj.	12.28

Longest unbroken stream I've written sor far at 215 measures. By nature this is easier to score on than other 19's so if Ryan 99's this, it doesn't count. No boosts, rolls at beginning.

Cranked Pastry

A Team Dark Psytrance Production

Chart Breakdowns - Page 7/7

The End - Blind Fury			
BPM	200	Stepartist	@@
Difficulty	19-	Total Steps	5913 (0 Jumps)
Simple Breakdown: 92-2-275			
In-Depth Breakdown: 35-9-48-2-23-0.5-136-33-0.5-83			
Total Stream	367	Total Break	3
Length	8:20	Length Adj.	7:31
Step Density	11.83	SD Adj.	13.11
The original Dark Psytrance boss song. Much more boosts than other songs, that's what makes it hard. Slowdown at the end. I wanted to do more Blind Fury but he doesn't make much music...			

The Galaxy Being - MetaHuman			
BPM	180	Stepartist	UPSFANBOY420
Difficulty	16-	Total Steps	3213 (0 Jumps)
Simple Breakdown: 87-16-52-31-57			
In-Depth Breakdown: 8-7.5-0.5-24-8-7.5-0.5-8-8-4-4-4-4-16-4-16-8-8-16-31-16-17-12-4-8-8			
Total Stream	195	Total Break	48
Length	6:19	Length Adj.	5:41
Step Density	8.48	SD Adj.	9.42
Borderish 16 to an awesome MetaHuman song. You get 2 big breaks, one of them HUGE compared to everything else in the pack, which make this pretty easy.			

Tripping Traffic - Setek				
BPM	199	Stepartist	Zaia & @@	
Difficulty	20	Total Steps	5664 (0 Jumps)	
Simple Breakdown: 80-4-255				
In-Depth Breakdown: 80-4-80-[46.5 with scattered bursts]-0.5-[128 with scattered longer bursts]-0.5-0.5-16				
Total Stream	335	Total Break	5	
Length	7:23	Length Adj.	7:06	
Step Density	12.79	SD Adj.	13.30	
It would be way too hard to convey what goes on in this chart with a breakdown. Take my word for it.				
Footspeed	46.5 Measures		FS BPM	248.75

Tripping Traffic - Setek			
BPM	199	Stepartist	@@
Difficulty	18+	Total Steps	5445 (0 Jumps)
Simple Breakdown: 80-4-255			
In-Depth Breakdown: 80-4-126.5-0.5-128-0.5-0.5-16			
Total Stream	335	Total Break	5
Length	7:23	Length Adj.	7:06
Step Density	12.29	SD Adj.	12.78
This file was way harder than I expected it to be. There is an interesting BPM gimmick that took forever to sync in the middle. Hard patterns, boosts, relentless. Probably the hardest 18.			

UVB 76 - Inner Coma			
BPM	190	Stepartist	@@
Difficulty	17+	Total Steps	4405 (1 Jump)
Simple Breakdown: 74-2-60-42-5-1-104			
In-Depth Breakdown: 24-32-24-18-2-4-8-7-1-8-8-8-16-42-5-1-28-76			
Total Stream	243	Total Break	45
Length	6:48	Length Adj.	6:04
Step Density	10.79	SD Adj.	12.10
Hard 17, minimal boosts but the middle "break" (15 notes a measure on average) is definitely the most technical thing in the pack. Purple notes galore. Song is good.			

Wild Neko - Shouton			
BPM	200	Stepartist	@@
Difficulty	18	Total Steps	4933 (1 Jump)
Simple Breakdown: 15-1-52-38-2-4-88-1-48-8-82.5			
In-Depth Breakdown: 4-11-1-8-10-15-1-18-38-2-4-8-16-48-16-1-48-8-34-24.5-0.5-4-4-16			
Total Stream	287.5	Total Break	52.5
Length	6:56	Length Adj.	6:48
Step Density	11.86	SD Adj.	12.10
Second favorite song in the pack, it is really epic. First break is pretty significant. I intentionally tried to make this have very hard patterns. No boosts.			

Cranked Pastry

A Team Dark Psytrance Production

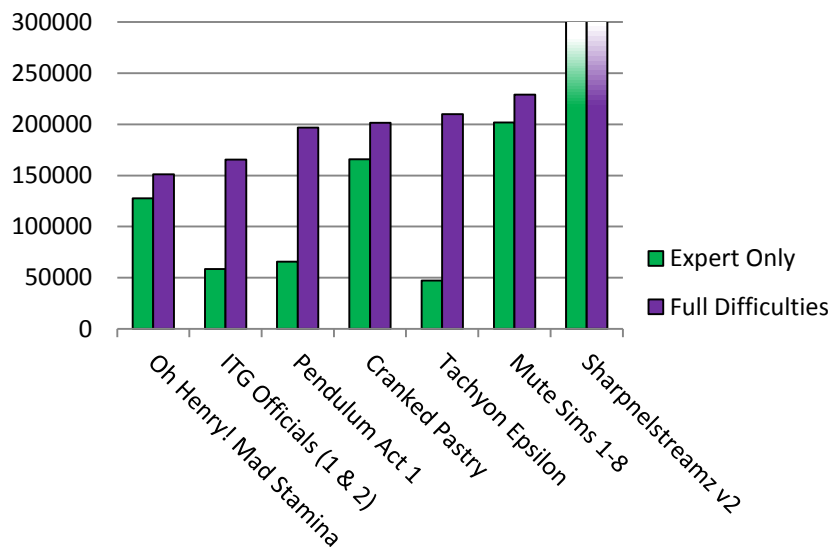
Pack Comparisons

Pack Name	Description
Cranked Pastry	Currently the hardest stamina pack ever made. Long songs with close to no break.
ITG Officials (1 & 2)	The official charts released with ITG 1 and 2. Short and mostly easy stuff.
Mute Sims 1-8	Popular series of easy packs. Each release has been relatively large.
Oh Henry! Mad Stamina	My previous pack and the former hardest stamina pack ever made.
Pendulum Act 1	Revolutionary in the way it brought dumpstream to the mainstream
Sharpnelstreamz v2	Largest stamina pack by songcount and charts. Has a lot of upper-end stamina.
Tachyon Epsilon*	Currently the hardest pack ever made. Focuses on footspeed

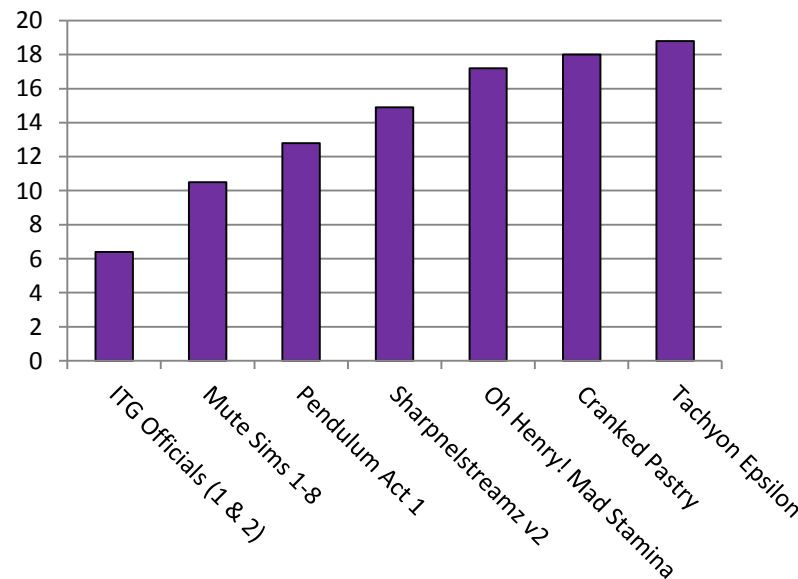
* I am only including novice charts for this pack in my calculations

Pack Name	Total Arrows	Average Difficulty	Total Charts	Average Arrows/Chart
Cranked Pastry	Expert Only: 165726	18.0	Expert Only: 30	Expert Only: 5524
	Full Difficulties: 201572		Full Difficulties: 37	Full Difficulties: 5448
ITG Officials (1 & 2)	Expert Only: 58546	6.4	Expert Only: 113	Expert Only: 518
	Full Difficulties: 165463		Full Difficulties: 524	Full Difficulties: 316
Mute Sims 1-8	Expert Only: 201907	10.5	Expert Only: 271	Expert Only: 745
	Full Difficulties: 228940		Full Difficulties: 322	Full Difficulties: 711
Oh Henry! Mad Stamina	Expert Only: 127655	17.2	Expert Only: 38	Expert Only: 3359
	Full Difficulties: 151037		Full Difficulties: 45	Full Difficulties: 3356
Pendulum Act 1	Expert Only: 65860	12.8	Expert Only: 30	Expert Only: 2195
	Full Difficulties: 196954		Full Difficulties: 120	Full Difficulties: 1641
Sharpnelstreamz v2	Expert Only: 369635	14.9	Expert Only: 146	Expert Only: 2532
	Full Difficulties: 620777		Full Difficulties: 280	Full Difficulties: 2217
Tachyon Epsilon	Expert Only: 47156	18.8	Expert Only: 30	Expert Only: 1571
	Full Difficulties: 210009		Full Difficulties: 150	Full Difficulties: 1400

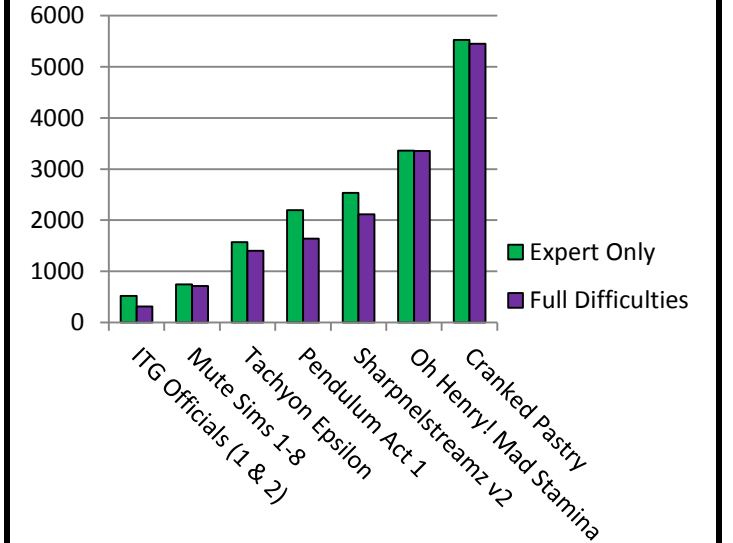
Total Arrows by Pack, Expert only and Full Difficulties



Average Difficulty By Pack



Average Arrows/Chart, Expert Only and Full Difficulties



Thank You For Playing!